

Heaven & Hell

Two Paths and Two Tools for a
Better Digital Workplace with LiveTiles



Erik Ralston
Chief Architect, LiveTiles







AI First?

Human Error

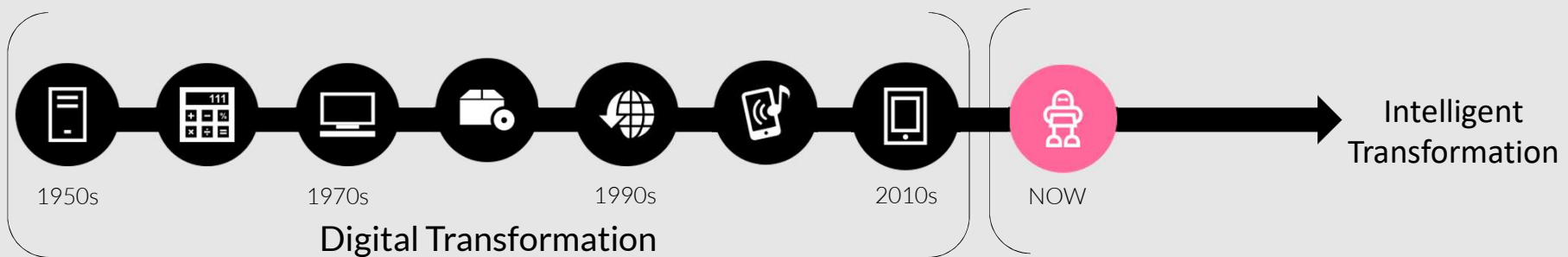
Two Tools

The Journey to Intelligent Transformation



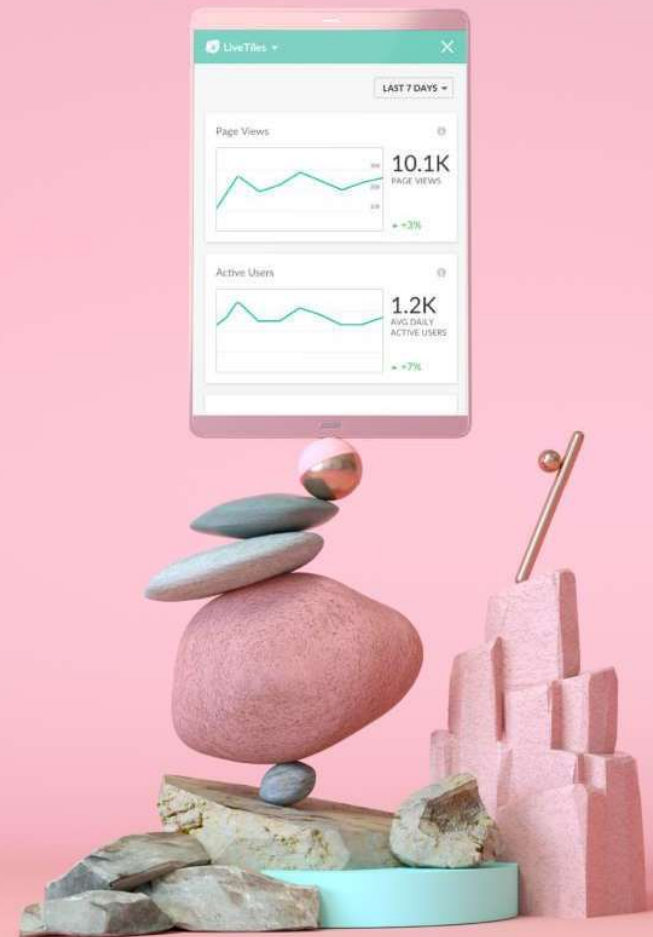
When **human** and **artificial intelligence** work together...

Employees are more productive and efficient, your customer experience is elevated and your business exponentially grows through **true intelligent transformation**. LiveTiles Bots will get you there faster.



“47% of jobs in the US are at risk of automation in the next 20 years.”

- S&P Global



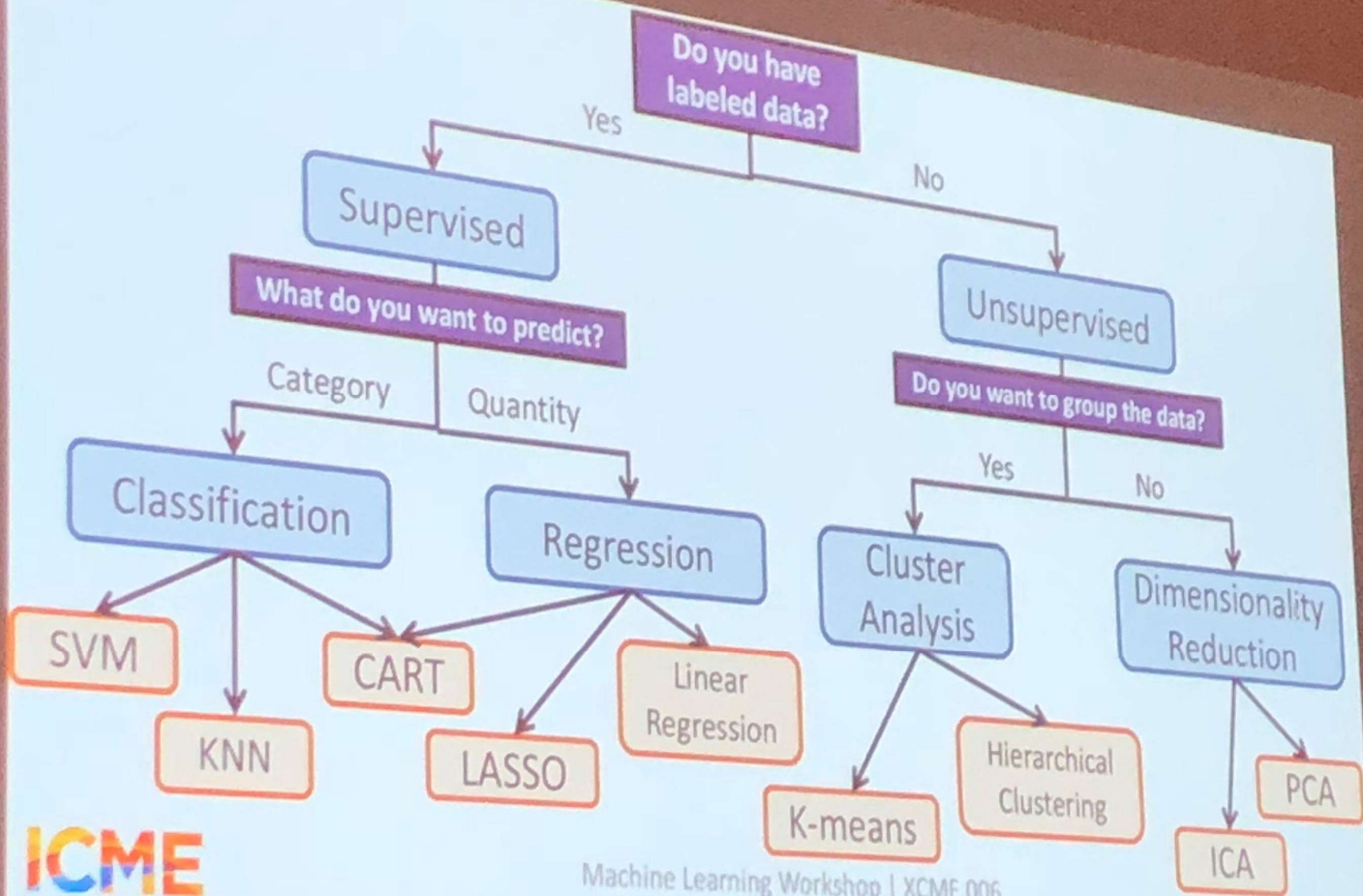
Microsoft Build

May 7-9, 2018 // Seattle, WA





AI First





AI First

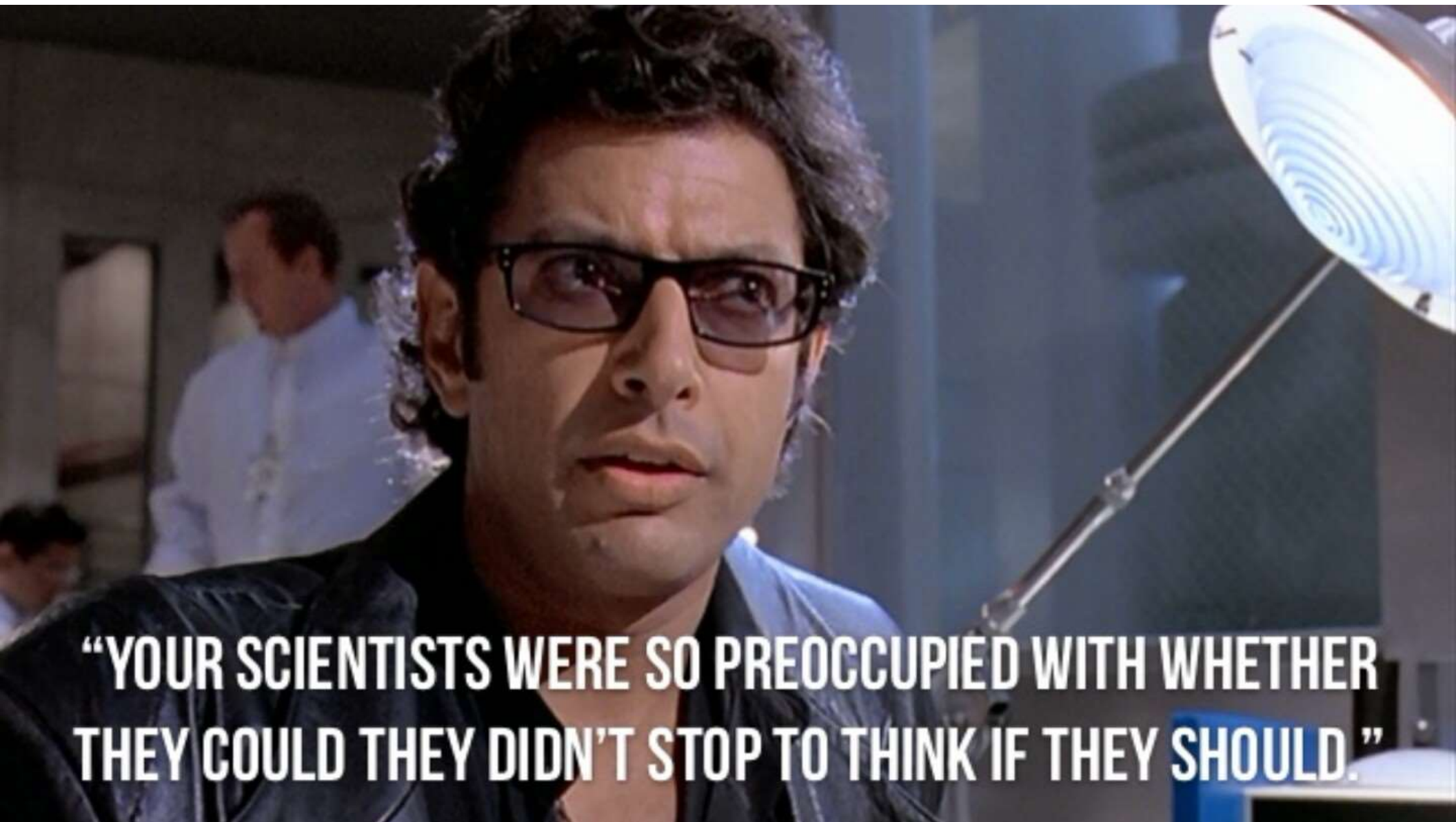


Ethics First





Machine Learning
Vision
Language



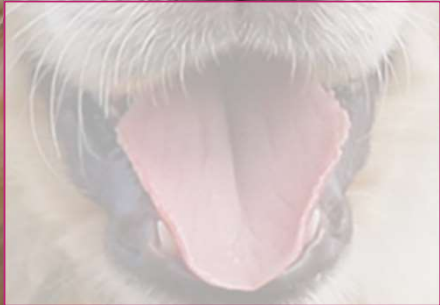
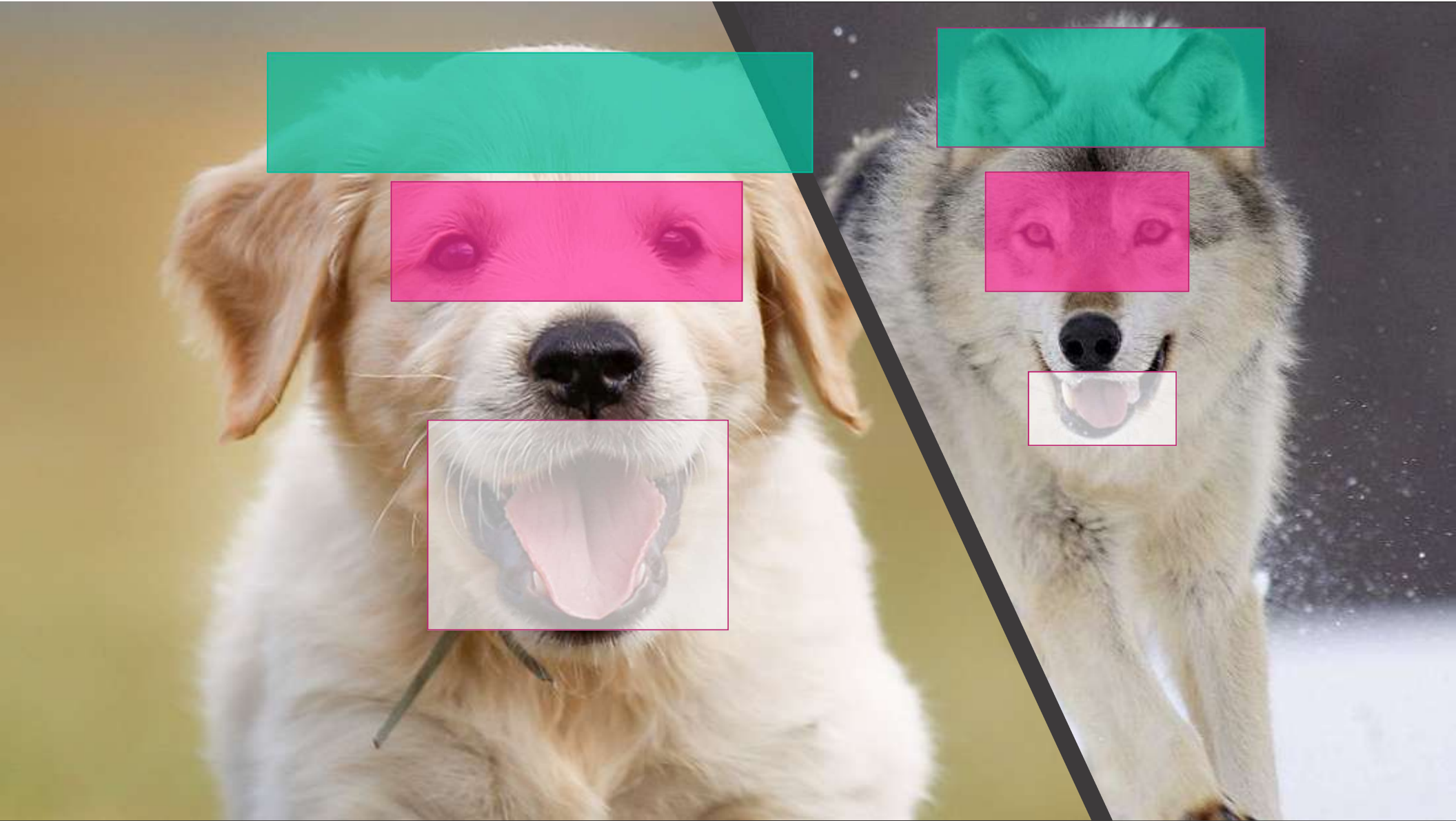
“YOUR SCIENTISTS WERE SO PREOCCUPIED WITH WHETHER THEY COULD THEY DIDN'T STOP TO THINK IF THEY SHOULD.”

A hummingbird is shown in flight on the left side of the image, facing left. The background is a dark blue gradient with out-of-focus light spots (bokeh) and a faint network diagram of nodes and lines. On the right side, there is a stylized, multi-colored geometric shape resembling a bird or a cluster of data points.

Visual Intelligence Made Easy

Easily customize your own state-of-the-art computer vision models that fit perfectly with your unique use case. Just bring a few examples of labeled images and let Custom Vision do the hard work.

[SIGN IN](#)







CORY MYERS

1 Main Street, New Cityland, CA 91010 | | C: (555) 322-7337 example-email@example.com

Summary

Versatile Operations Supervisor skilled in distribution management who thrives in dynamic, challenging, and fast-paced professional environments. Assertive and enthusiastic, with extensive knowledge of warehouse logistics and an unsurpassed worth ethic. Seeking to apply management talents to drive long-term company growth and success.

Highlights

- Warehouse management
- Team leadership
- Distribution organization
- Continuous improvement
- Quality assurance
- Cost-conscious
- Familiar with Kronos
- Motivated
- Results-oriented
- Good problem solver

Experience

- Operations Supervisor** May 2009 to Current
DMS Distribution - New Cityland, CA
- Oversee unloading, storage, and distribution of goods moving through warehouse.
 - Review and analyze metrics to assess performance and accurately allocate loads.
 - Establish guidelines for proper shipment according to specifications.
 - Train and mentor employees on safety practices.
 - Accurately track performance, attendance, and other metrics.
 - Resolve issues with safety, performance, and grievances between employees promptly.
- Operations Supervisor** Sep 2005 to Mar 2009
BW Logistics - Bellingham, WA
- Kept shift on schedule with deliveries and production goals.
 - Set deadlines for work and monitored progress.
 - Motivated employees with positive reinforcement.
 - Planned shift activities by consulting with previous shift leader and management.
 - Implemented continuous improvement and safety initiatives.
- Inventory Associate** Nov 2002 to Aug 2005
BW Logistics - Bellingham, WA
- Inspected incoming merchandise and verified against paperwork.
 - Performed monthly inventories and handled variances.
 - Coordinated storage layouts and inventory tracking.
 - Put together pallets and shipping containers according to specifications.

Education

- Associate of Science, Supply Chain and Logistics Management** 2003
Bellingham University - Bellingham, WA



CORY MYERS

1 Main Street, New Cityland, CA 91010 | | C: (555) 322-7337 example-email@example.com

Summary

Versatile Operations Supervisor skilled in distribution management who thrives in dynamic, challenging, and fast-paced professional environments. Assertive and enthusiastic, with extensive knowledge of warehouse logistics and an unsurpassed work ethic. Seeking to apply management talents to drive long-term company growth and success.

Highlights

- Warehouse management
- Team leadership
- Distribution organization
- Continuous improvement
- Quality assurance
- Cost-conscious
- Familiar with Kronos
- Motivated
- Results-oriented
- Good problem solver

Experience

Operations Supervisor

May 2009 to Current

DMS Distribution - New Cityland, CA

- Oversee unloading, storage, and distribution of goods moving through warehouse.
- Review and analyze metrics to assess performance and accurately allocate loads.



Human Error

BLACK SABBATH



HEAVEN AND HELL





Self-Service
NOT Self-Serving



Hit Refresh

The Quest to Rediscover
Microsoft's Soul and
Imagine a Better
Future for Everyone

with
a foreword by
Bill Gates

Satya Nadella

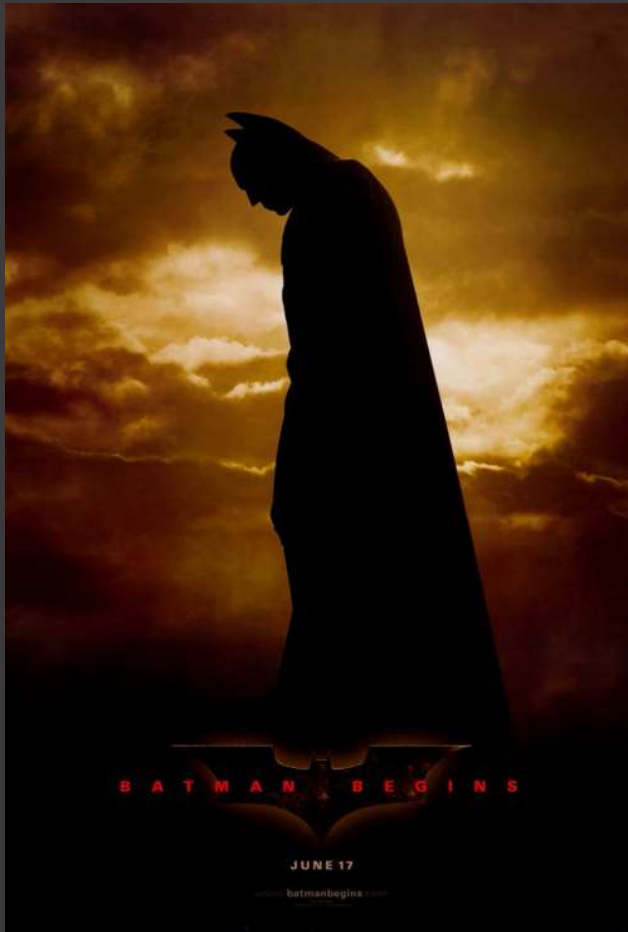
Microsoft's CEO with Greg Shaw & Jill Tracie Nichols



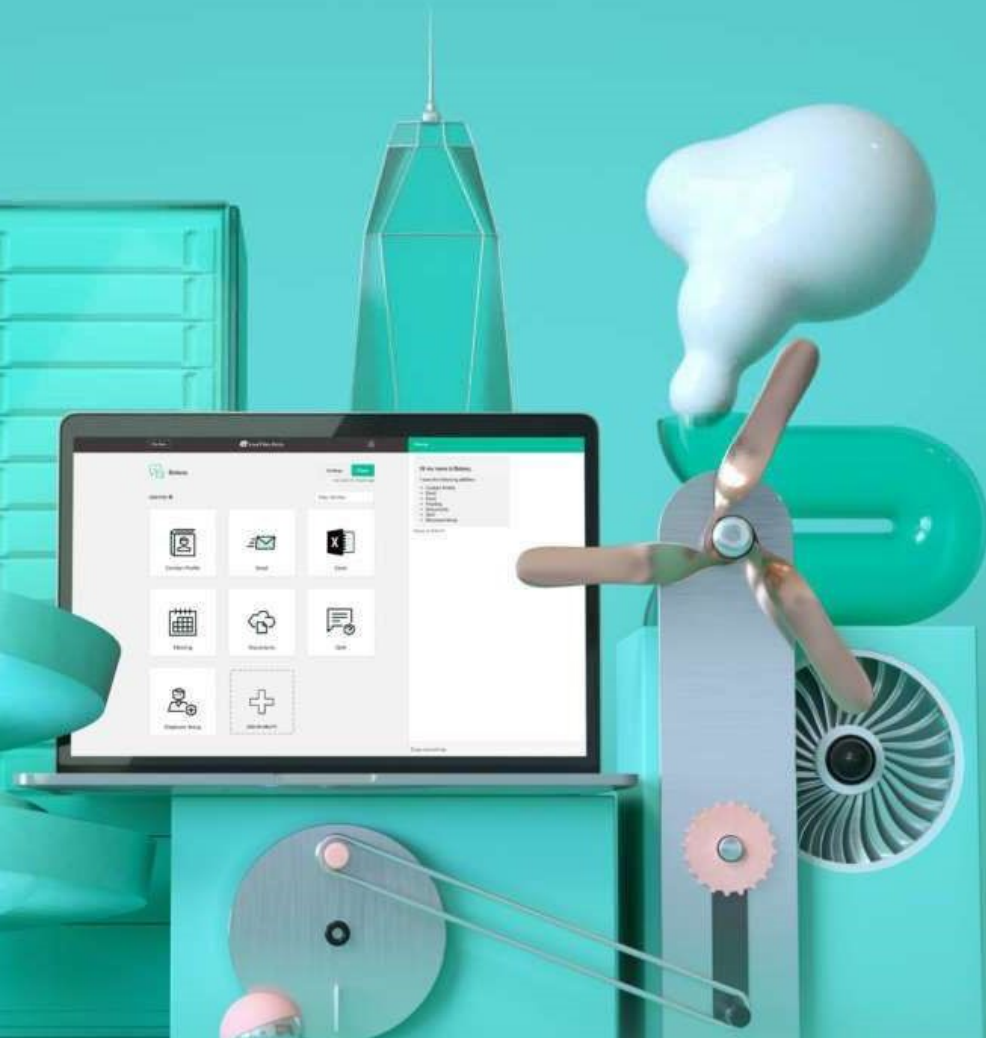
Empathy

Creativity

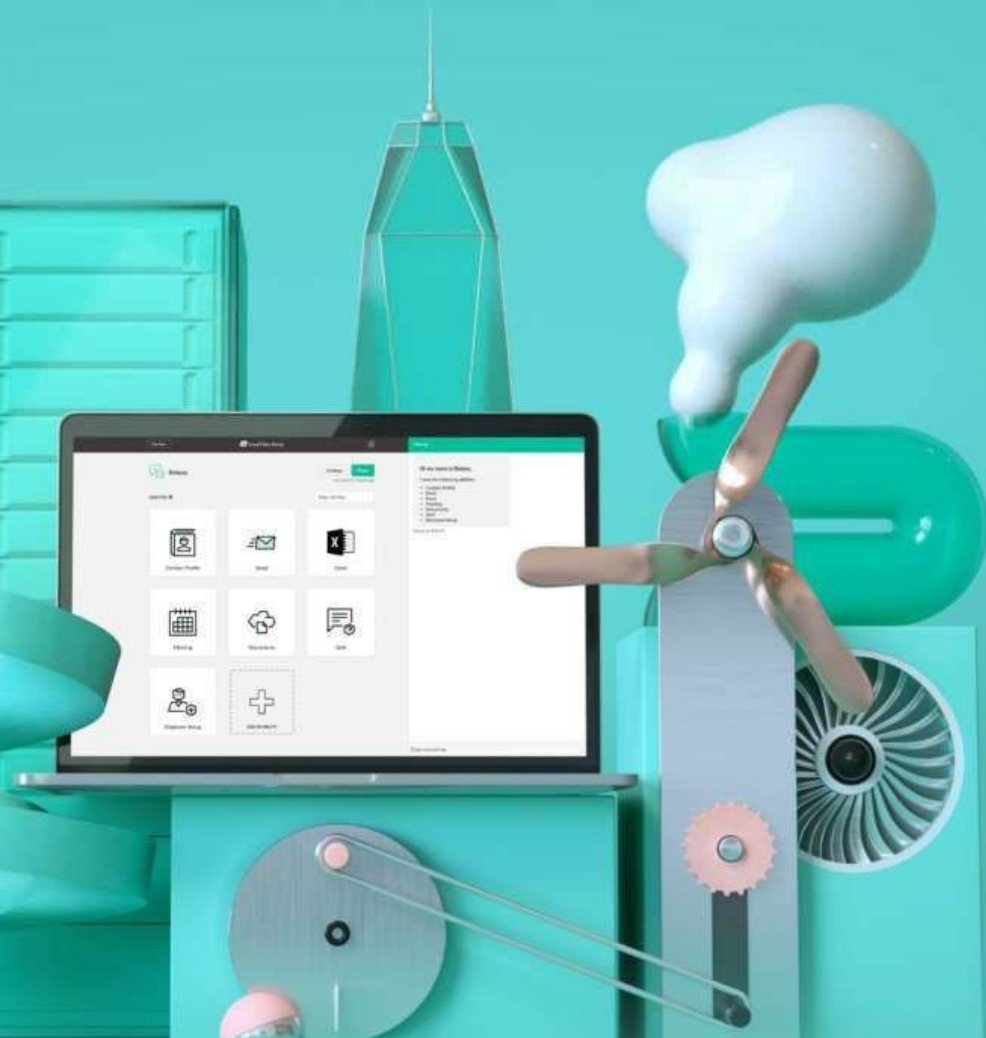
Accountability



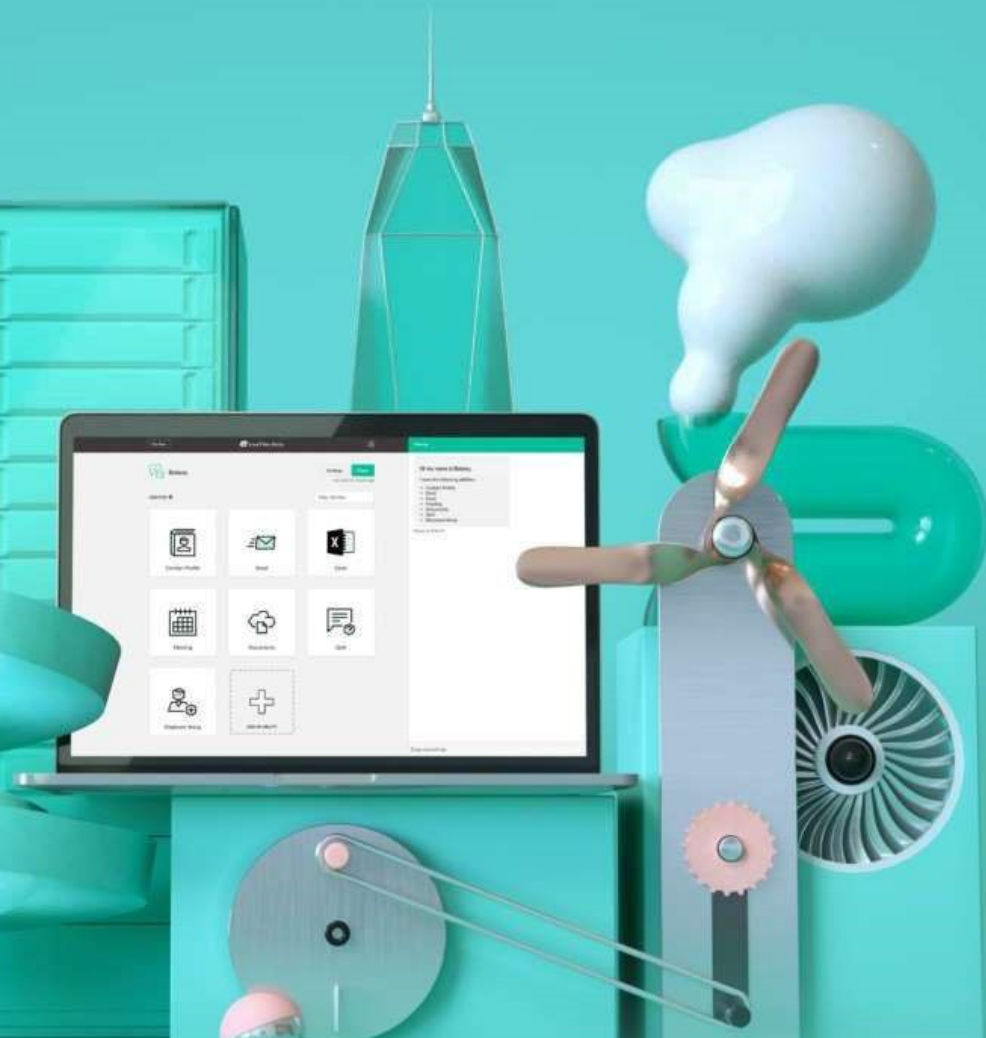
Transparent Data



Auditable Algorithms

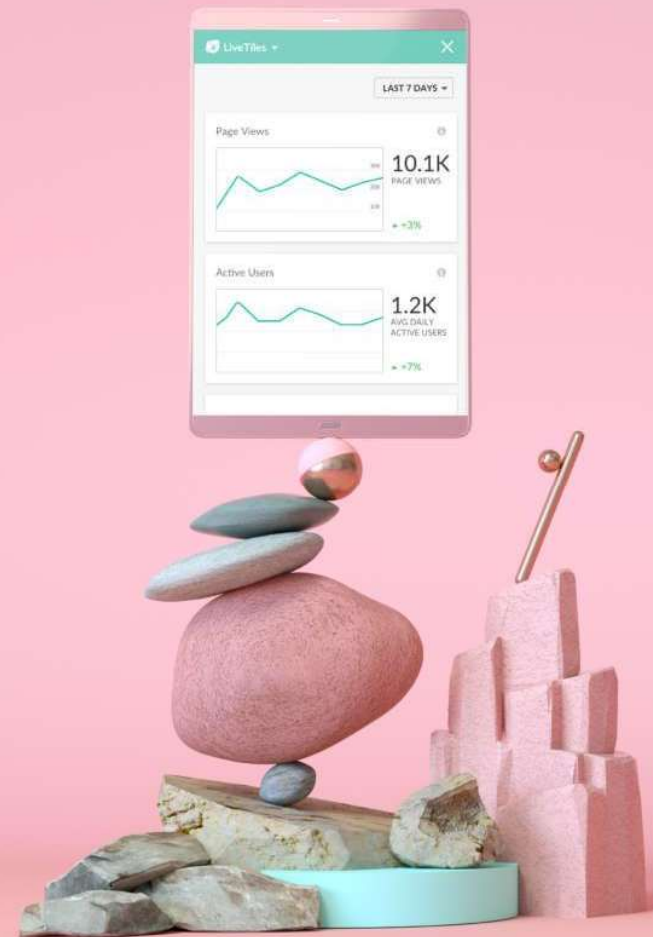


Reversible Decisions



“47% of jobs in the US are at risk of automation in the next 20 years.”

- S&P Global







"If the robots are indeed coming, and doing so in full force, we should recognize that in principle this is a good thing, but start paying much more attention to the challenges this will pose for societal institutions and the social contract."

Dr. Paul Sheard, PhD
Vice Chairman, S&P Global



Economic Impact of AI

Dr. Paul Sheard, PhD
Vice Chairman, S&P Global

www.livetiles.nyc

[https://www.livetiles.nyc/
whitepaper-the-economic-
impact-of-ai](https://www.livetiles.nyc/whitepaper-the-economic-impact-of-ai)

LiveTiles Today



Headquartered in **New York** with bases across North America, United Kingdom, Europe and Australia

Public company listed on the Australian Securities Exchange (ASX:LVT)

Our customers range in size from **25 to over 300,000 users**, with several fortune 500 companies – including Pepsi and Nike.

275 partner resellers around the world.
Global Microsoft partner

13 years of R&D
\$30M in R&D Next Two Years

Dedicated dev team based in the **US** and **Australia**

Clients Of All Sizes Across All Industries

Agriculture

MARS

Media &
Entertainment



CARNEGIE HALL

FOX
NETWORKS GROUP

Government



Not-For-Profit

unicef 
australia

Business
Services



group *m*

Manufacturing



Retail /
Consumer
Packaged Goods



HARVEY
NICHOLS

Education



The
Alan Turing
Institute

Financial
Services



Transportation

Alaska
AIRLINES



Construction/
Architecture/
Real Estate



Services

IPG

Interpublic
Group

Energy

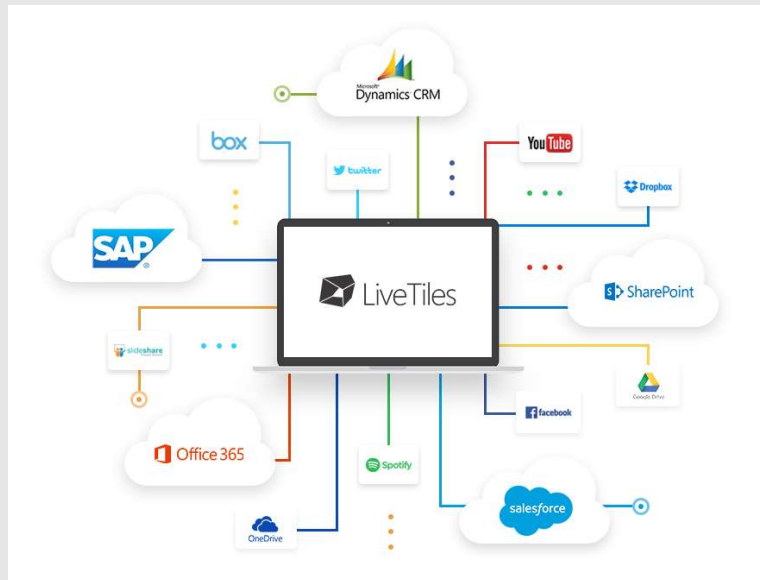


Healthcare &
Pharmaceutical/
Biotech



ESTÉE LAUDER

LiveTiles provides the **flexible intelligent workplace platform** to enable organizations to drive greater productivity and embrace constant change in a fast-paced modern world



- ✓ Integrates seamlessly
- ✓ Rapid deployment
- ✓ Easy to use & configure
- ✓ Employee engagement & adoption
- ✓ Mobile friendly & device agnostic
- ✓ Cost effective
- ✓ Incorporates Artificial Intelligence

"This type of best of breed technology allows us to execute on a client's vision rapidly, with a reduced time to value."

Rory Quinn
Director, Digital Workplace, **Deloitte Consulting**

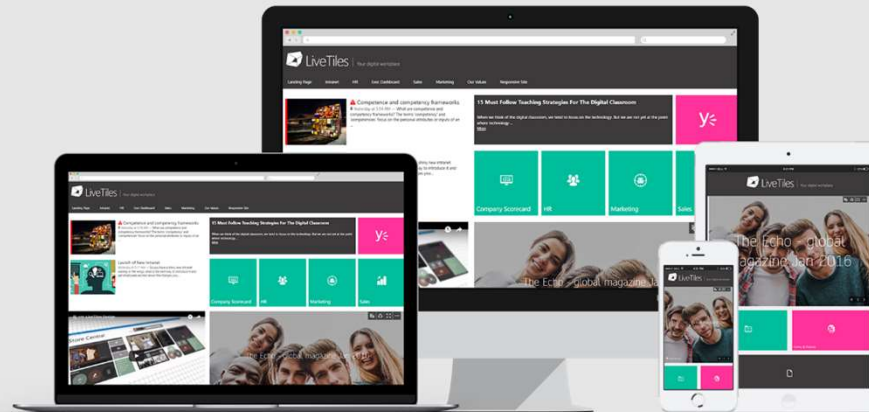
LiveTiles Design

LiveTiles Design



An all-in-one solution for content, collaboration and integrations. Create engaging sites on SharePoint, Office 365 and Azure.

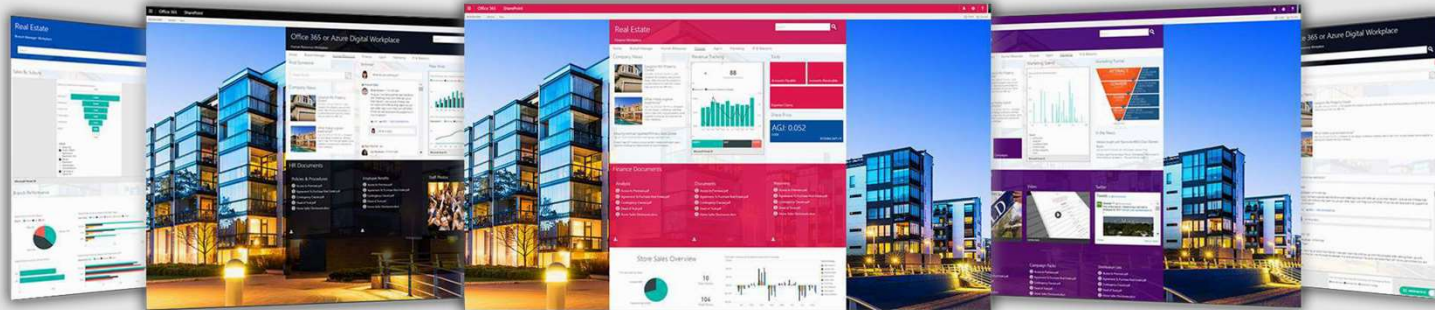
Drag and drop preconfigured tiles onto a responsive canvas and create modern, mobile-friendly pages.



The foundation that unites your workplace and empowers your employees. LiveTiles Design and LiveTiles Bots for a beautiful AND smart workplace.

Quickly build compelling solutions which drive communication, productivity, and engagement. LiveTiles easily integrates with many 3rd party systems making it truly an all-in-one solution

LiveTiles Design Benefits



Simplicity

- No-code user experience (with extensibility)
- Information at a glance with one-click access
- Modern, mobile-friendly interface consistent across desktop, tablet and mobile views

Engagement

- Increase user adoption
- Boost employee engagement
- Raise staff collaboration
- Integrate cloud based or backend system seamlessly for a unified UX
- Improve productivity throughout your organization

Efficiency

- Reduce dev costs and time to deployment
- Over 70 proven and tested web parts
- Fast drag and drop design experience
- Realize ROI on Microsoft product suite faster and sustain user adoption
- Evergreen product model - Product auto updated every two weeks

LiveTiles Design For any Platform



LiveTiles Design

LiveTiles SharePoint

Create limitless solutions over **SharePoint & Office 365** for content, data, collaboration and integrations. No code, no fuss. Simple drag and drop canvas with custom code options to sync with disparate systems and apps.

LiveTiles Cloud

Ideal for organizations that want to create engaging team sites, surfacing content, data, integrations, independent of SharePoint or Office 365.
Hosted in Microsoft Azure.

LiveTiles Mosaic

Our LiveTiles SharePoint product, made free for K-12 schools around the globe. Used by schools for the creation of intranets, class and staff portals, collaboration and project sites and more.

LiveTiles SAP

Integrate your LiveTiles SharePoint experience with your SAP Software. Update vendor details, raise purchase orders, approve quotes all within the LiveTiles experience.

LiveTiles MX

Quickly deploy mobile apps for any platform and equip your workers with mobile solutions they can easily access on their devices.

LiveTiles API Integrations & Connectors



LiveTiles **integrates** and connects with over 130 of the most popular enterprise grade applications on the market today.



LiveTiles Bots

“By 2020, the average person will have more conversations with bots than with their spouse.”

- Gartner

