



Microsoft
Azure

Security in the New Remote World

Joel Sloss, Sr. Pgm Mgr
Microsoft Azure M&E

Another
Glorious
Day in the
Corps-
(antine)



©20th Century Fox

Topics Today (in 10 minutes or less)



The “new normal” everyone is talking about



You must work from home
(home office != Starbucks)



Can a remote edit / animation
desktop really work?



- What changed?
- Now who/what/where/how?



New Normal,
or New
Nightmare?

aaaannd ...
there went my lunch ...

Working Alone

My graphics workstation is under my desk ... at work

My home connectivity is less than ideal

I can't collaborate (well) with my production team

All of my assets are ... somewhere

and I miss the office espresso machine

Stuck in My Bedroom / Kitchen / Basement



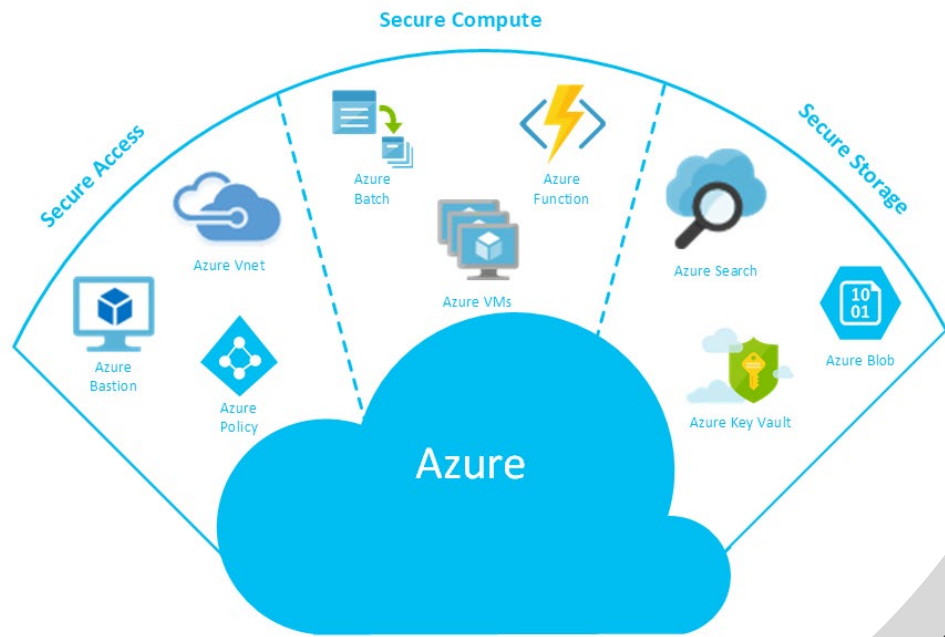
No coffee shops, restaurants, libraries,
conference rooms, or bars

*Remote isn't a question of if/when anymore;
it's a requirement*



I need, right away:

- High-performance workstation and storage
- Reliable but flexible connectivity
- HD (maybe 4K/UHD) support, 2+ monitors, 30fps+
- Frame-accuracy, audio sync, color accuracy
- Centralized assets + accessibility for post-production
- Collaborative review, edit, VFX



Secure by Nature

- Cloud offers more native security than many production houses are used to
- Reduces fragmented security implementation across multiple vendors / services / providers
- Helps unify perimeters, policies, defense strategies, etc.

Tomorrow (is today) in the Cloud

Increase access and scale now, securely

New Capabilities

- Virtual workstations w/HDR, UHD, HFR via WVD, PCoIP
- Tiered-storage with fully addressable archive
- AI processing -> high-performance, intelligent storage with metadata and analytics
- High-thruput network ingest, virtual / physical appliances

Distributed Production

- New and remote locations, securely and seamlessly
- Collaborate from any device, with anyone, with almost any toolset (edit-on-demand, VFX, script, ...)
- Features / episodic / unscripted – understand what you have and where, create content faster, leverage assets

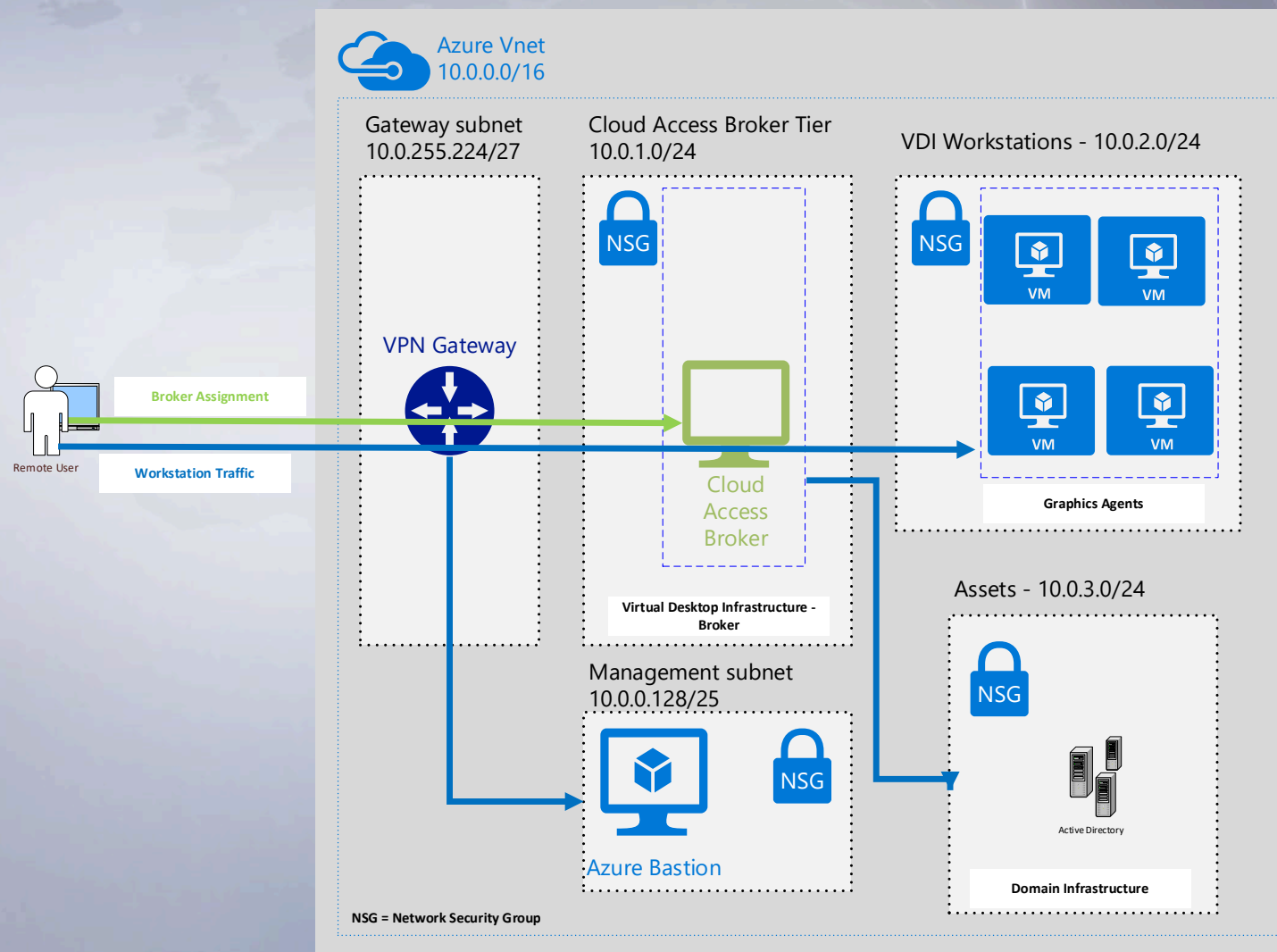
Secure Performance

Authenticated, encrypted storage and isolated networks over private links

Role-based authorization, multi-factor authentication, defense-in-depth

Inherently secure "pixel pushing"; block up/download

MAM/DAM, watermarks, secure distribution/access of sensitive pre-release content



I'm Still Stuck in My Basement

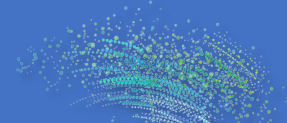
Considerations	Thoughts
Physical security concerns	<ul style="list-style-type: none">• Badge entry in your work-space? (i.e., children, roommates, ...)• Fully secure workstation (hardware baseline config.) or PCoIP
Solutions	<ul style="list-style-type: none">• Turnkey vs. roll-your-own (determined by scale)
Data protection / collaboration	<ul style="list-style-type: none">• Teams, Office 365 – encryption, DRM• Collaboration – libraries (SharePoint), assets (DAM, MAM)
Endpoint protection	<ul style="list-style-type: none">• Watermarking during production / post
Network security	<ul style="list-style-type: none">• Encryption, bastion hosts, isolated VMs for each user• Firewalls (host and user), ACLs, protocol filtering
User ID management – provisioning / deprovisioning	<ul style="list-style-type: none">• Secure remote access and control – MFA, granular auth policy• Challenges in ensuring appropriate user / group access and management across 1+ productions
Things for the studio / production company	<ul style="list-style-type: none">• Data centralization, redundancy• Bring artists <i>and</i> applications to content, not the other way around• Securely connect to render capacity, archive• Improve performance with caching using Azure HPC Cache

Who's Doing This, Anyway?



The WALT DISNEY Studios
studiOLAB

technicolor



teradici

STRATUSCORE



- Educational Videos, demos
 - Industry Experts: <https://aka.ms/thecontrolroom>
 - Index / Retrieve - <https://youtu.be/nkPi7-VVcEU>
 - Collaboration - <https://youtu.be/tFA1HCecedE>
 - Production - <https://youtu.be/kc14STSLkns>
- Coming Soon ([Azure Trust Portal](#))
 - Secure VDI configuration guidelines
 - Updated editorial configuration hardening guide



WOULD YOU LIKE TO KNOW MORE?