

Account sharing and turnover: Turning loss to loyalty

Diane Benjuya, IBM Security

Gregor Frimodt-Moeller, Group CEO, any.cloud

When you interact with IBM, this serves as your authorization to MESA or its vendor to provide your contact information to IBM in order for IBM to follow up on your interaction. IBM's use of your contact information is governed by the IBM Privacy Policy.

\$9.1 Billion, 2019

\$12.5 Billion, 2024



Cultural

“Credential sharing falls into two categories. **Most sharing is casual**, with no intent to profit.”

Criminal

“But the bigger risk is from pirates that purchase large stolen consumer databases via the 'Dark Web' and **use automation to discover penetrable end user accounts.**”

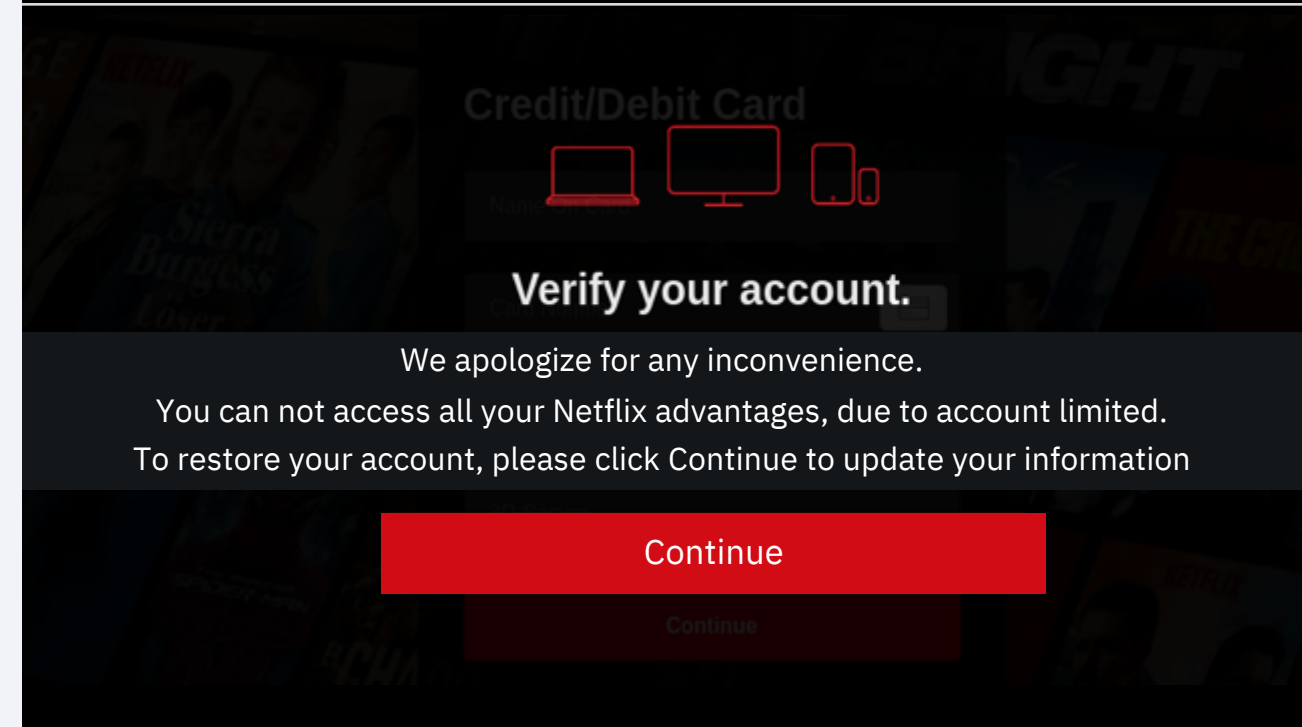
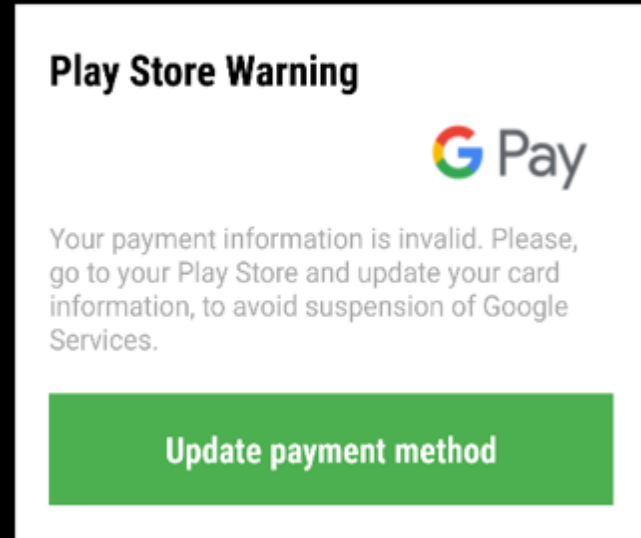
Digital identity fraud “kill chain”

1. Compromised account
2. Fraudulent login
3. Monitoring
4. Monetization

Malware

Phishing

Bots



Data is a steal on the dark web

Accounts of every major streaming service available - and at “great” discounts

Pinned message
Instead of getting ripped, Learn spamming today & get your own fresh cc's. Tools Ave

DM for long term business

I do PayPal loading both old and new accounts ..
Also.. High hitting Cc with a balance of \$4400 and Above that can be used for online payment,shopping and more at an affordable rate & Western Union transfers to all country

PREMIUM ACCOUNT(UNLIMITED)

- ✓ Netflix Account
- ✓ Amazon Account
- ✓ Disney

✓ BANK LOGS ✓

- CHASE BANK
- COMMERCIAL BANK
- WELLS FARGO
- BANK OF AMERICA
- CITIBANK
- CAPITAL ONE & MANY MORE...

✓ PayPal Price & CashApp Price ✓

- 50btc for \$500
- 60btc for \$600
- 70btc for \$700
- 80btc for \$ 800
- 90btc for \$900
- 100btc for \$1000
- 150btc for \$1500

✓ Western union Transfer price & Bank Transfers ✓

- 50btc for \$500
- 100btc for \$1000
- 200btc for \$2000
- 300btc for \$3000
- 400btc for \$4000
- 500btc for \$5000

Telegram: 11:11

SUBSCRIPTION ACCOUNTS

- Netflix (unlimited for 2years)==70\$
- Amazon prime (unlimited for 3years)==100\$
- Recurly (unlimited for 1year)==20\$
- Panty (unlimited for 1year)==30\$
- Hulu (unlimited for 5years)==70\$
- Xbox (unlimited for 5years)==60\$

Using HACKED, VALID and VERIFIED accounts to transfer to your account with NO! RISK. If you're genuine, you can easily dodge a VALID account and enjoy big free online money. Its depends upon you and its most safest way to earn money.

MONEY TRANSFERS SERVICES:

- CashApp
- Nerdwallet
- Payeer
- PayPal
- Skrill
- TransferWise
- Venmo
- Worldremit
- Zelle

MONEY TRANSFER PRICE LIST:

- \$10== \$100
- \$20== \$200
- \$30== \$300
- \$40== \$400
- \$50== \$500
- \$60== \$600
- \$70== \$700
- \$80== \$800
- \$90== \$900
- \$100== \$1500
- \$200== \$2500
- \$300== \$3500
- \$400== \$4500
- \$500== \$6500

admin

I'm the best,I give the best,I provide 100% sure fixed correct database daily.Congratulations to all those who have been winning with me,and am also proud of my source for changing our lifestyle. Personal investment in gambling. Start yours now.

5:34

Any Premium Accounts at cheapest price!

Some of the New Offers:

- Disney+ USA: \$8 (Lifetime)
- Disney+ USA: \$2 (No warranty)
- Netflix UHD: \$3 (1 month)
- Netflix UHD(Full Mail Access): \$30 (Lifetime)
- CBS Premium: \$7 (Lifetime)
- Sling.TV Blue+Orange[Auto Renew]: \$10 (Lifetime)
- Sling TV (Orange + Blue, Orange, Blue) [Auto Renew] : \$3 (No warranty)
- DC Universe: \$11 (Lifetime Warranty)
- Hulu (Showtime, HBO NOW, Cinemax, Lie TV, No Commercials): \$1 (No warranty)
- NORD VPN: \$2 (No warranty)
- GFUEL - \$25 Gift Card: \$12
- Hulu(Showtime, HBO NOW, Cinemax, Lie TV, No Commercials): \$7-\$10 (Lifetime Warranty)
- DirectTV: \$10-15 (Lifetime Warranty)
- WWE:\$9 (Lifetime Warranty)
- Showtime:\$10 (Lifetime Warranty)
- Plex Pass: \$6 (Lifetime Warranty)
- Deezer Premium:\$9 (Lifetime Warranty)
- Napster Premium:\$10 (Lifetime Warranty)
- Nord VPN: \$7 (Lifetime Warranty)
- Skillsshare:\$10(Lifetime Warranty)
- Brazzers:\$15 (Lifetime Warranty)
- Mofos :\$15 (Lifetime Warranty)
- Vixen :\$15 (Lifetime Warranty)
- Gmail :\$9 (Lifetime Warranty)
- Yahoo US PVA :\$8.5 (Lifetime Warranty)
- AOL US PVA:\$8.5 (Lifetime Warranty)

There are many ways to clamp down on account sharing

Manage a device list per account

Send a security notification

Offer an upgrade

Block concurrent logins

Shut down the account



Assessing digital identity risk is at the heart of the solution

- **Real time assessment of risk of fraud** of every user session
- **A frictionless experience** for low risk sessions



**“We are now in a position where we
are one step ahead of the hackers.”**

CEO, leading European video streaming service

The background features a complex network diagram with numerous nodes and connecting lines. The nodes are represented by small circles, some of which are highlighted in a light blue color. The lines are thin and light blue, creating a web-like structure that fills the entire frame. The overall color scheme is dark blue, giving it a technological and digital feel.

any.cloud

Gregor Frimodt-Møller
Group CEO

What is any.cloud?

Consumer security
specialist

ISO27001 certified
company

Customers in 29
countries

CSA Star Alliance
certified

IBM's most innovative
partner in Europe, 2020

IBM Cloud Partner of
the Year 2017 and 2019
in Denmark

Headquarters in
Copenhagen and offices
in Poland, the Czech
Republic and Finland

Founded in 1998



SEND VERIFICATION CODE

Warning!

Please
download!

Keep Your Privacy Settings
On

**Click here to
agree**

Please, update your
user

2FA

Reenter
password

two-factor authentication

Warning

Someone logged
into your account

Your account has been
hacked

Keep Your Privacy Settings
On

two-factor authentication

Login

Select all images
with a bus

**Warning
!**

Your
password is
incorrect

**Click here to
agree**

**Your password
is incorrect**

World population 2020: 7.8 billion

Users online 2020: 4.5 billion



Source: World Statista, 2020



Our ideology



**Customer
Experience**

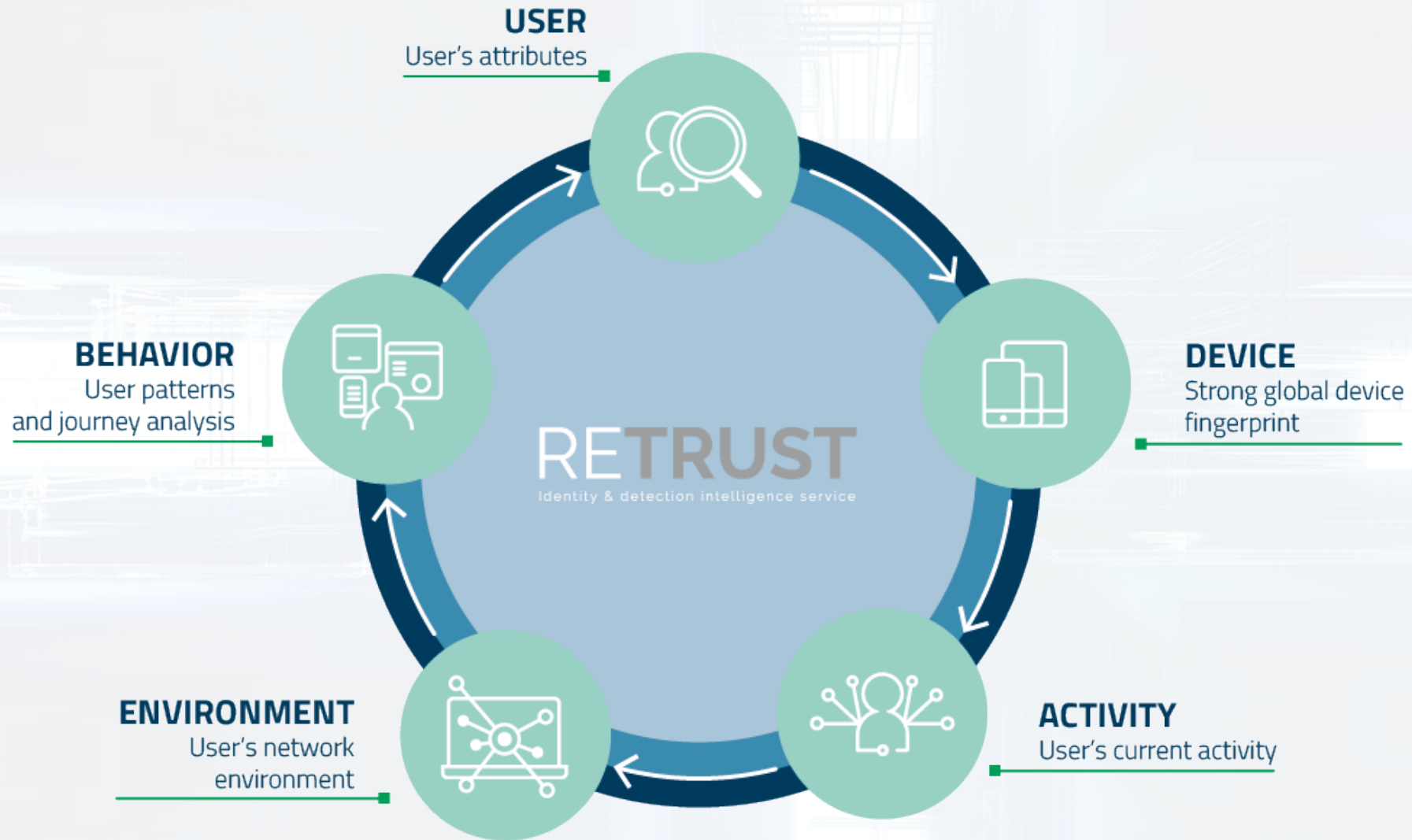


**Digital
Trust**



**Fraud
Prevention**

How does account profiling work?



Think about if you were to secure the journey without impacting the online experience for the user.

Securing who is who

Pinpoint data to be consumed by the application or third party risk engine



Device Intelligence

- Device ID
- Screen Resolution
- Screen dpi
- Screen touch
- Client time zone
- First seen/last seen
- Last change
- Rapport_machine_id
- OS languages
- Platform/CPU/OS
- User Agent
- Random cookie
- Blacklisted/ Known Fraudster
- RAT Indication
- Proxy indication
- Spoofed device



Connection/Analytics

- Remote Addr
- IP class
- ISP
- Org
- Country
- Region
- City
- Post code
- IP time zone
- Longitude-Latitude
- Referrer
- x_forwarded_for
- Network IPs path
- Area Code
- Accepted content types



Browser Intelligence

- activeX
- history_length
- js_enabled
- accept_encoding
- Counter
- Digest
- Fonts
- file_upload_indicator
- Mimes
- file_upload
- navigator_props
- browser_version
- client_charset
- Browser + version
- Character set
- Languages
- network_data
- plugins



Passive Biometrics

Blacklisted/ Known
Fraudster based on:

Keyboard Input

- Input normal
- Input bad
- Input anomaly
- Input Scripted
- Input replay
- Input automation

Mouse Input

- Mouse type
- Mouse bad
- Mouse anomaly
- Mouse replay
- Mouse automation



Threat Intelligence

Malware Data

- Malware ID
- Malware Name
- Organization is Targeted

Carrier Analytics

- Phone type
- Name match
- Address match
- Contract type

Risk Assessment

- Risk Score
- Risk Reason: RAT, SE, new device after phishing, etc.
- Recommendation

Data consortium

58,000,000,000+

Over 50B web hits per month

300,000,000,000,000+

Over 300 TB data

<516 billion
data events

500K
malware
samples

140K
phishing sites

120K
malware
configurations

3K security
updates

Business case

BLOCKBUSTER®

So... how can we elevate your platform?

Account
takeover

Password
sharing

Site spoofing

Family sharing

Leaked
credentials

Phishing

Data forensics

Compliance

Geolocation

Customer
loyalty

Win-win: Identity risk protection meets a differentiating customer experience

Thank you

Contact us:

Patrick Vowles, IBM, Americas

patrick.vowles1@us.ibm.com

ibm.com/security

Diane Benjuya, IBM Worldwide

diane@il.ibm.com

ibm.com/security/fraud-protection/trusteer

Gregor Frimodt-Moeller, any.cloud

gm@anycld.dk

linkedin.com/in/gregormoller

https://retrust.global

© Copyright IBM Corporation 2020. All rights reserved. The information contained in these materials is provided for informational purposes only, and is provided AS IS without warranty, of any kind, express or implied. Any statement of direction represents IBM's current intent, is subject to change or withdrawal, and represent only goals and objectives. IBM, the IBM logo, and other IBM products and services are trademarks of the International Business Machines Corporation, in the United States, other countries or both. Other company, product, or service names may be trademarks or service marks of others.

Statement of Good Security Practices: IT system security involves protecting systems and information through prevention, detection and response to improper access from within and outside your enterprise. Improper access can result in information being altered, destroyed, misappropriated or misused or can result in damage to or misuse of your systems, including for use in attacks on others. No IT system or product should be considered completely secure and no single product, service or security measure can be completely effective in preventing improper use or access. IBM systems, products and services are designed to be part of a lawful, comprehensive security approach, which will necessarily involve additional operational procedures, and may require other systems, products or services to be most effective. IBM does not warrant that any systems, products or services are immune from, or will make your enterprise immune from, the malicious or illegal conduct of any party.

When you interact with IBM, this serves as your authorization to MESA or its vendor to provide your contact information to IBM in order for IBM to follow up on your interaction. IBM's use of your contact information is governed by the IBM Privacy Policy.

