

# Work From... Everywhere



Leading Video Editing Organization Unlocks the  
Key to Scaling Secure Productivity

December 2022

John Jacobs – Field CISO

# Customer Outline

Evolving Workplace Demanded a Look Forward

## Outline

**Who:** Growing media and graphics company with international scope

**Trend:** growing number of remote offices (with more pending), leading to a large increase in hybrid and *pure remote* workers

## Challenges

Content was increasingly being shared and stored in public cloud

Why? speed, cost and agility

Legacy office environments were secured with aging firewalls and connectivity was mixed between sites

Wireless access had become the norm, but was also inconsistent between locations

# Three User Types

Solutions across deployment types

## Branches/Partners



# Desired Outcome: Secure LAN Edge

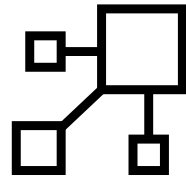
A security-driven approach to networking through convergence

## SECURE



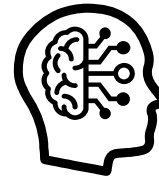
Convergence of security and network access

## SIMPLE



Adaptive and integrated platform that eliminates appliance, configuration, and licensing sprawl

## INTELLIGENT



Adaptive and resilient networking, allowing AI/ML to drive better security **and** user experiences

### Conclusion:

It would take a fresh approach to expand security without disrupting business



# Customer Action

Need: Consistent and Secure Workplace(s)

## Began investigation

- Intelligent firewall (NGFW)
- Application steering SD-WAN
- Integrated, secure wireless
- Also included remote/SOHO solution to ensure fluidity across environments

## Steps

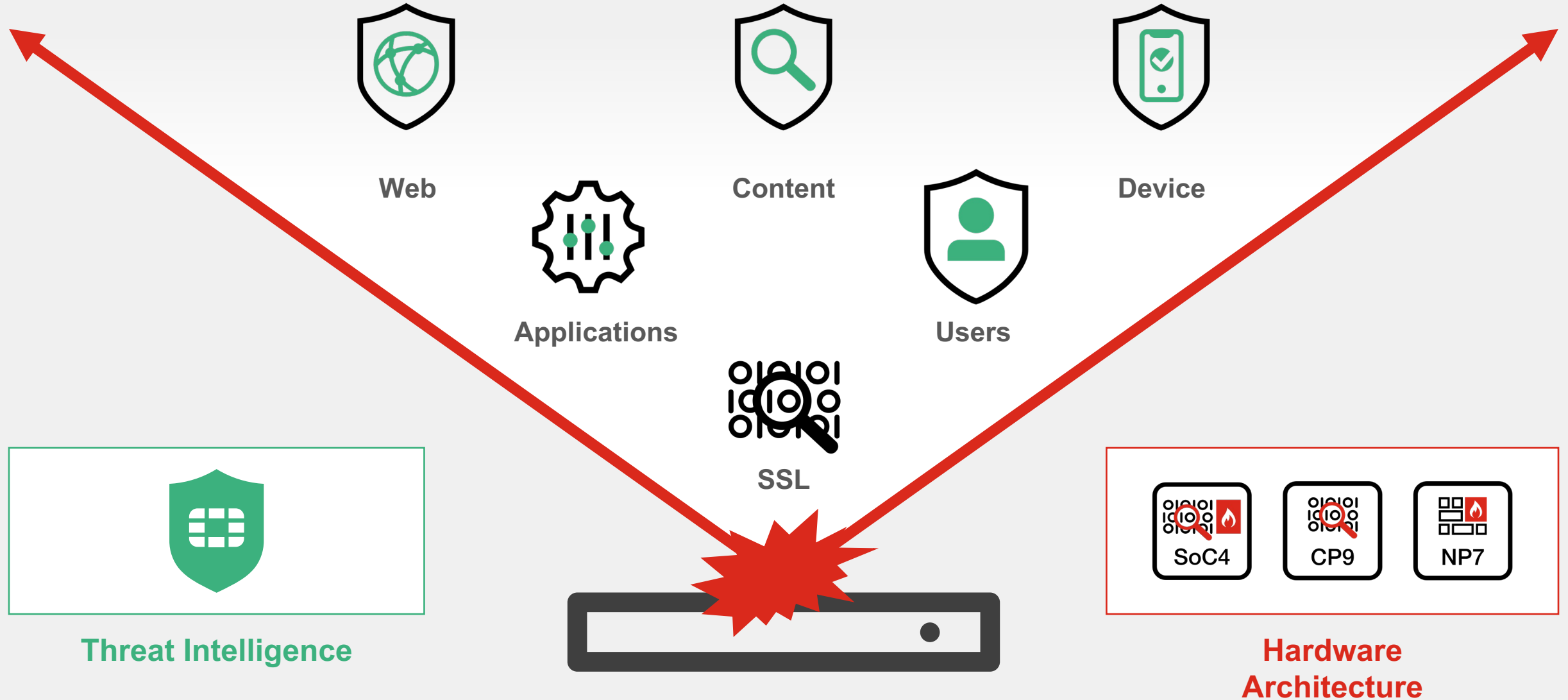
- Phased implementation, starting at the edge
- Upgraded to a NGFW standard platform
- Include upgraded wireless, with security policies to the outward edge
- Choose commodity bandwidth and backup solutions & SD-WAN policies to steer traffic

## Key lesson

- Data center and cloud updates were left to last (Most effort to migrate)



# Edge Protection: Deep Visibility & Security

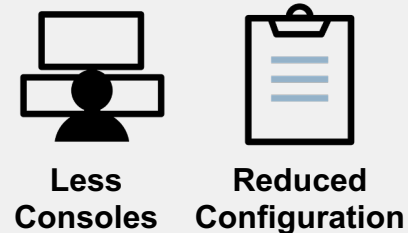


# Delivering a Secure SD-Branch

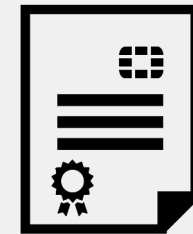
## Branch Requirements



## Convergence



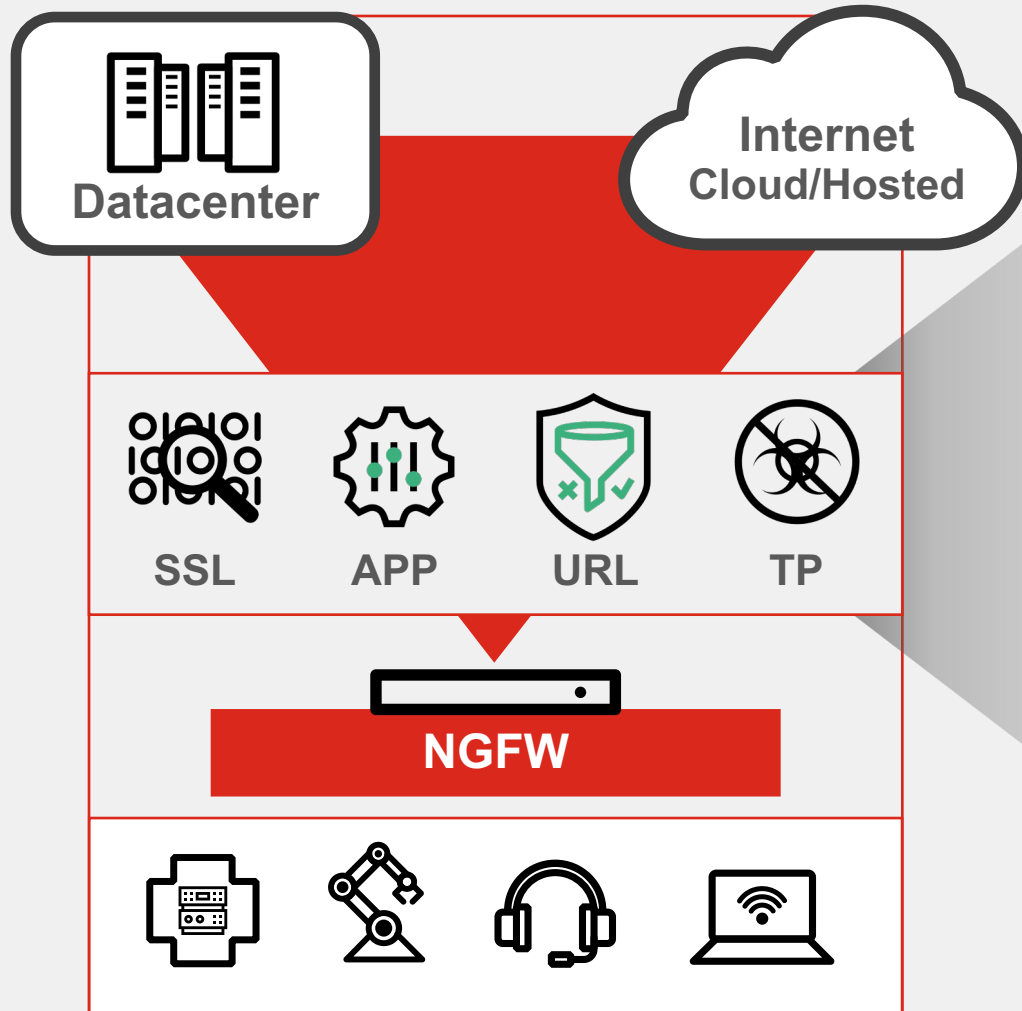
## Measured ROI, Better Security, & Easier Operations



Fewer Licenses  
Simplified Operations



# Campus/HQ



## EDGE PROTECTION

Powerful visibility and security for the perimeter

## CONVERGED NETWORKING

Simple networking and security in one platform

## ENTERPRISE AUTOMATION

Control attack surfaces, provide actionable SOC info





# Converge: SD-WAN & WWAN

## DIFFERENTIATIONS

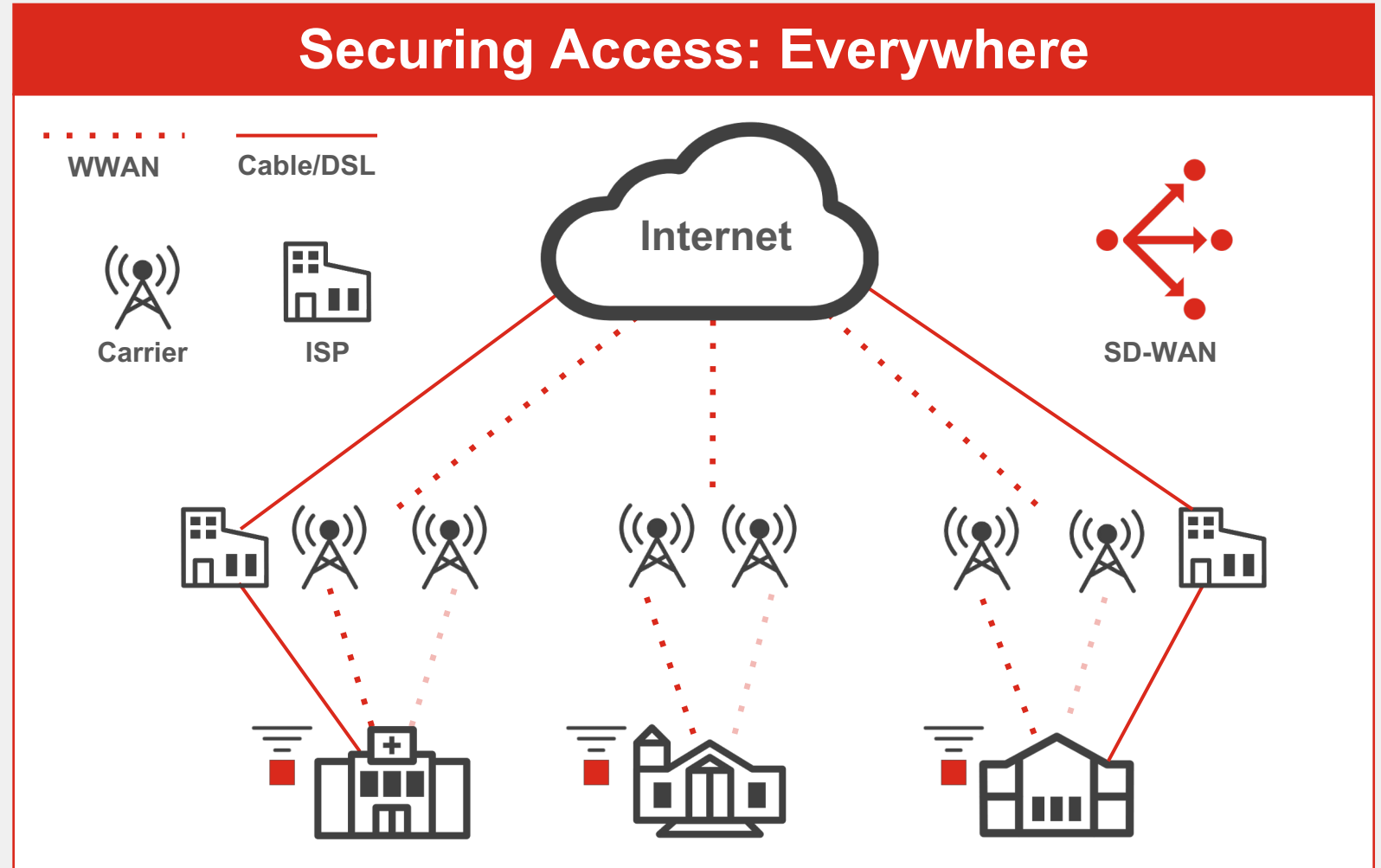
- Integrated management
- Simplified licensing
- Improved security protection

## CAPABILITIES

- Protect local Internet breakout
- Select the best path for applications
- Automate security and networking policies with ease

## BENEFIT

- Deliver solid experiences for campus users, while protecting their activity



# Groundwork: Zero Trust Network Access

## DIFFERENTIATIONS

- Integrated ZTNA enforcement
- Simplified Licensing
- Universal ZTNA—on-net, off-net

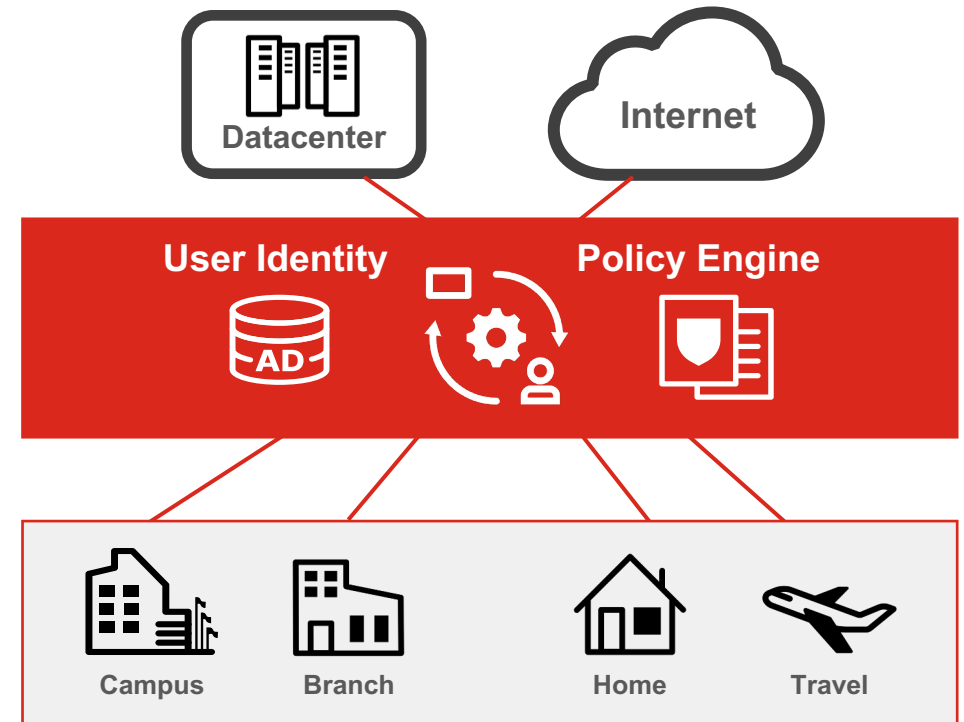
## CAPABILITIES

- Enforcement close to the user and application
- Constant authentication and security posture check to build consistent security
- Granular application-level segmentation

## BENEFIT

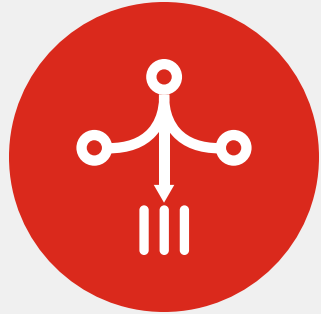
- Delivering strong user to application controls, compliance and consistent convergence

## Device and User Enforcement



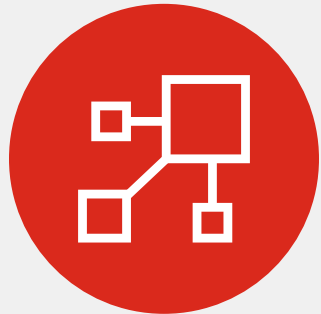
**ZTNA Anywhere**

# Value of Migration



## Convergence of Network and Security

Breaks down silos centralizing data crucial for effective AI/ML



## Simplified Operations

Single interface and operating system  
Centralized automation, orchestration



## TCO Benefits

Reduced management complexity  
Few licenses, more function, clear-cut value





**FORTINET®**